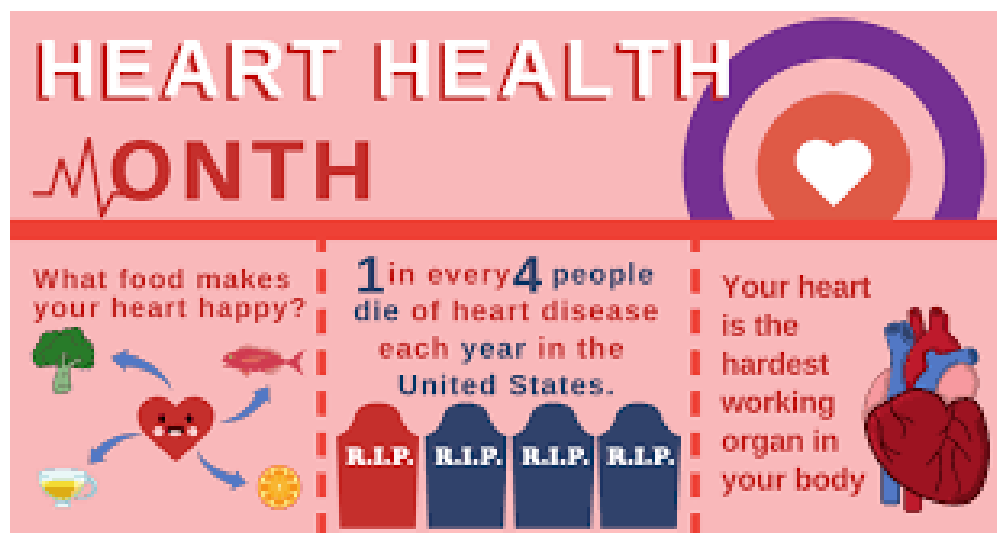


What's Happening...



Follow us on Social Media:



Save the Date



Where it's OK to
look and **touch!**

SAVE THE
date

May 13, 2023

9:00am-2:00pm
Wayne County Fairgrounds

**Quiet Time
RESERVED**

(no loud noises or flashing lights)

9:00 am-11:00 am

Got Books?

We take book
donations!



pfcw.org

Literacy is an integral part of a child's development. Our Little Libraries located around Wayne County, give families access to free books for children and families. We gladly accept book donations of children's and chapter books!

Board Spotlight

BOARD SPOTLIGHT

Natalie Kemp



Dept. Chair of Psychology
University of Mount Olive

Current position and number of years employed?

Department Chair for Psychology, Associate Professor of Psychology
Full time at UMO since 2013 and have been serving as the
Department Chair since 2016

Why did you chose to be on the BOD for the Partnership?

I remember when the vision of Smart Start and the Partnership was started and people were afraid the grant would only last a year or two. Through the years, it has been such a blessing to watch the programs grow and influence our community in such a powerful way. I love that the Partnership addresses the whole child and family by targeting safety, physical and mental health, education and resilience. These factors will strengthen our community and provide a better future for the next generations and it is a privilege to be part of this kind of work.

How do you think the Partnership impacts the community?

The Partnership has had a powerful voice of advocacy and education in our community. The programs they offer are dynamic, engaging and based on the needs that arise over time in a flexible way.

Favorite Quote:




Trust in the Lord with all your heart, and do not lean on your own understanding.

In all your ways acknowledge Him, and He will make your paths straight. - Proverbs 3:5-6

Favorite Children's Book:

Love you Forever by Robert Munsch was my favorite to read to my children at night.

Circle of Parents



YOU'RE INVITED TO

Circle of Parents

Circle of Parents is for anyone in a parenting role (of children ages 0-5). It is a place where you can find and share support.

Possible topics include:
New baby, special needs, biting/hitting

Meetings every Monday 10 - 11:30 Am
Location: 800 N William St. Goldsboro, NC

For more information or to sign up, contact Angela Frady at 919-735-3371 Ext. 237

GAS CARD DRAWING EVERY MONDAY

WEEKLY DOOR PRIZES

FREE



ESTAS INVITADO AL

Circle of Parents

Círculo de Padres es para cualquier persona en el rol de padre con niños de 0 a 5 años. Es un programa donde puedes encontrar y compartir apoyo.

Posibles temas pueden ser como:
Nuevo bebe, necesidades especiales, morder/golpear

Las reuniones son los Lunes de 10 - 11:30 Am
Lugar: 800 N William St. Goldsboro, NC

Para más información o para inscribirte contacta a Angela Frady at 919-735-3371 Ext. 237

DIBUJO DE TARJETA DE GASOLINA TODOS LOS LUNES

PREMIOS DE PUERTA SEMANALES

GRATIS

Parents As Teacher (PAT)



Being a parent is hard work.

Parents as Teachers (PAT) is a voluntary family education and support program for parents of young children. The program is based on the beliefs that parents are their children's first and most influential teachers and that the early years lay the foundation for children's success in school and in life.

**Want more information about this program?
Contact the PAT Program!**

**Angela Frady: afrady@pfcw.org
919-735-3371 ext. 237**

**"Being a parent
isn't what I
expected!"**

**Services are
provided to all
parents who have
children 0-5.**



Sign up for this program today!



Ser padre es un trabajo duro

Parents as Teachers (PAT) es un programa voluntario de apoyo y educación familiar para padres de niños pequeños. El programa se basa en la creencia de que los padres son los primeros y más influyentes maestros de sus hijos y que los primeros años sientan las bases para el éxito de los niños en la escuela y en la vida.

**Quieres más información sobre este programa?
Comuníquese con un educador de padres**

**Angela Frady: afrady@pfcw.org
919-735-3371 ext. 237**

**"Ser padre no es
lo que esperaba!"**

**Los servicios se
brindan a todos
los padres que
tienen hijos de 0
a 5 años.**



Inscríbese en este programa hoy!

[Visit our Website](#)

NC Pre-K

NORTH CAROLINA

NC Pre-K



It's Time to Enroll!

The Partnership for Children is now accepting Pre-K applications for the 2022-2023 programming year. Download the application from our website: www.pfcw.org or pick one up at our office.

To qualify your child must be four on or before August 31, 2022. To begin the application process, we require a copy of the birth certificate and proof of one month's income for any parents living in the home.

Applications may be returned to the Partnership by mail or in person; or, they may be emailed to Maria at mlopez@pfcw.org.



Visit us:

Facebook: [@PFCWayne](https://www.facebook.com/PFCWayne)

Instagram: [@pfcwayne](https://www.instagram.com/pfcwayne)

Twitter: [@PartnershipWayn](https://twitter.com/PartnershipWayn)

YouTube: [@PFCWChannel](https://www.youtube.com/PFCWChannel)



800 N. William Street
Goldsboro, NC 27530
(919) 735-3371 ** www.pfcw.org

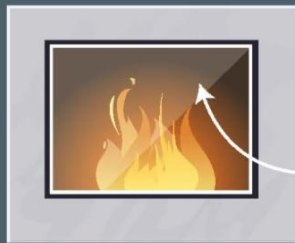
[Visit our Website](http://www.pfcw.org)

Dolly Parton's Imagination Library



[Visit our Website](#)

Safe Kids



Child Safety Around Gas Fireplaces

3rd degree burns are serious and can happen in less than 1 second from contact with the glass on the front of a gas fireplace.



Every day, **3 children** under age 6 go to the ER for burns related to fireplaces, including gas fireplaces.



Young children can be **unsteady** as they learn to walk, often using surfaces within their reach to pull themselves up.



Little ones have **slower reflexes** and may not be able to move their hands away quickly when they touch something hot.



Young kids have **thinner skin** on their palms than adults, which can lead to more serious burn injuries.

How hot are they?



212°F
boiling water



350°F
baking a cake



400°F
hair iron



500°F
glass on a gas fireplace

Tips for Parents and Caregivers

Watch children around fireplaces. When a gas fireplace is turned on, the glass is extremely hot and can take more than an hour to cool down after it is turned off. Keep children away from the fireplace to prevent burns from the hot glass.

Make sure your gas fireplace has a **safety screen or safety gate**. These barriers help keep children away from the hot glass on fireplaces. If you need a safety screen, contact the fireplace retailer or manufacturer for the best option for your fireplace.

Keep fireplace remote controls out of children's reach and sight. Make sure children also stay away from on and off switches for gas fireplaces.

Think about places outside of your home with fireplaces. When traveling to other homes, restaurants, hotels or resorts, there may not be a safety screen or safety gate installed. Keep children away from the fireplace and teach them not to touch the glass.

If there is an emergency, call the doctor or 9-1-1 immediately. Physicians can give you information on how to treat a burn correctly.

SAFE
KIDS
WORLDWIDE.

Community Events



21st Annual State of the Child will be held in person this year at Wayne Community College. The conference will take place on Tuesday, March 7th.

Follow the link for more information and register for this wonderful conference!

[State of the Child Conference](#)



Visit [Communities Supporting Schools](#) for more information!

About Us!

How can you support our mission?



About us:

The Partnership for Children of Wayne County, Inc. is a non-profit organization designed to provide programs and services for families and children in Wayne County, North Carolina. We build partnerships with families and the community to create a comprehensive system of early care and education. In doing so, our community leads the way in building a brighter future for all of North Carolina.

[Trainings](#)

[Staff](#)

[Donate now](#)

[Programs](#)



Partnership For Children of Wayne County | 800 North William Street, Goldsboro, NC 27530

[Unsubscribe tnevins@pfcw.org](mailto:tnEVINS@pfcw.org)

[Update Profile](#) | [Constant Contact Data Notice](#)

Sent by bcOX@pfcw.org powered by



Try email marketing for free today!