

# Mission

The Partnership for Children unites the community to effectively support and empower families, prepare children to succeed in school and encourages continuous learning for educators of young children, therefore contributing to the economic vitality of Wayne County.

# Vision

Children will receive the start they need to become educated, healthy and self-reliant people, who strengthen the social and economic future of Wayne County.



a partner in the  
smart start network



*Children are*  
**NO SMALL MATTER**

800 N. William St.  
Goldsboro, NC 27530  
919-735-3371  
[www.pfcw.org](http://www.pfcw.org)

**Valerie Wallace**  
Executive Director



**Impact Report to the  
Community 2021**

The Partnership for Children of Wayne County has worked to serve families and young children for over twenty years. It is the pleasure of the Board of Directors and the staff of The Partnership to share the 2020-2021 Annual Report. The following pages will highlight and present an overview of the accomplishments that were made during the year.

The Partnership for Children of Wayne County has a strong history of achieving high standards of accountability. This past year has proven that as an organization we are able to adjust, overcome and implement our programs and services to children and families of Wayne County.

To our early childhood community...THANK YOU! Your unwavering commitment to young children and families is evident. Over the past two years, you have rose to the challenge of making a difference in the lives of young children. You have been an anchor to so many children during a time that is so crucial to their development. Without your dedication and loyalty to this profession, the infrastructure of the early childhood field would crumble. You are so valued!

Thank you to our community partners and individuals who contributed to our mission. The Partnership Board of Directors and staff appreciate your commitment to young children.

Thank you to the staff of the Partnership. Your dedication and support for children, families and providers were evident in the work that has been done. As we move forward, we will continue to maintain a high standard of excellence and provide services that make a difference to families, children and providers.

Please continue to partner and collaborate with us as we strive to provide equitable early childhood and educational services that benefit our whole community.

Sincerely,



Valerie Wallace  
Executive Director



Matthew Whittle  
Board Chairman



Smart Start was created in 1993 as an innovative solution to a problem: children were going to school unprepared to learn.

Policymakers recognized that progress would require tapping into the same innovative spirit that inspired private sector advances, and established Smart Start as a public/private partnership. Independent, private organizations work in all 100 North Carolina counties through the North Carolina Partnership for Children, Inc., and 75 local Smart Start partnerships.

The power of Smart Start is that it delivers outcomes by giving communities local control to determine the best approach to achieving them.

Visit: [www.smartstart.org](http://www.smartstart.org) for more information

## Partnership Events

### Partnership Christmas

A drive-thru event was held where Santa greeted children and distributed bags full of goodies, which included a book and a stuffed animal donated by Pet Smart.

### Festival of Trees

Partnership staff decorated a tree which was displayed at Odom Farming Company's Christmas Celebration.

### Week of the Young Child Celebration

The Week of the Young Child was celebrated through several events. Families were treated to a drive-thru parade of characters and resources provided by the Partnership. Wayne County and the City of Goldsboro proclaimed the week of April 11-17 as the Week of the Young Child.



### Resiliency Screening

The Partnership, in collaboration with WAGES and the Paramount Theater, hosted a screening of the *Resilience* documentary. The work around adverse childhood experiences continues to be a part of all programming at the Partnership.

### Child Abuse Prevention Month

The Partnership participated in a month long campaign to bring awareness to child abuse and prevention. Pinwheel gardens were planted throughout the county.

### Early Educator Appreciation

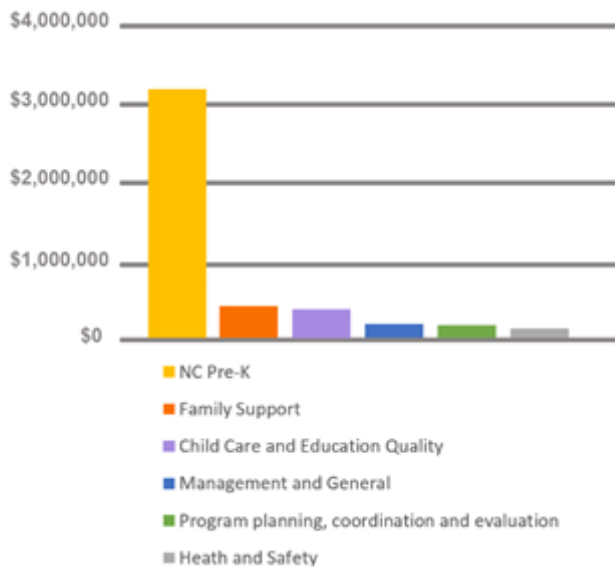
Early Educator Appreciation was celebrated during the month of April. Educators were given tokens of appreciation by the Partnership.



# Our Investments

## Invested over \$ 4.2 Million in Community Programs

### Smart Start Breakdown



Health & Safety  
\$91,353.00 (2%)

Program Planning, Coordination & Evaluation  
\$128,202.00 (3%)

Management and General  
\$148,067.00 (4%)

Early Care & Education  
\$342,205.00 (8%)

Family Support  
\$355,219.00 (8%)

NC Pre-Kindergarten  
\$3,218,233.00 (75%)

The Partnership for Children of Wayne County distributes both public and private dollars to fund evidence-based & evidence-informed programs that support children ages birth-5. All funded programs work toward the mission of preparing every child for kindergarten.

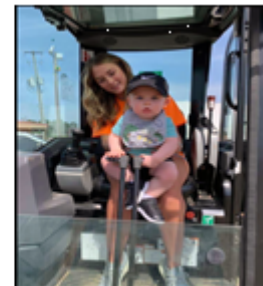
## Revenue & Support

State Awards and Contracts: \$2,084,649  
Private Contributions: \$1,888,278  
Special Fundraising Events: \$30,327  
Other: \$11,584

## Fundraising

### Touch A Truck

The Partnership hosted the 4th Annual Touch A Truck event in May. We appreciate the support of sponsors, vendors and the community that made the event a success.



### Lobster & Shrimp Fest

The 16th Annual Lobster & Shrimp Fest was held in September. We want to thank donors, volunteers and all who helped us meet our financial goal.

# Community Programs

## Early Care & Education

Child Care Subsidy

Child Care Resource & Referral

WAGES Salary Supplement

Professional Development

NC Pre-Kindergarten Program

Lending Library

- \$669,640 was provided in Child Care Subsidy to parents in order to offset the cost of child care.
- 100 child care providers from 45 facilities received WAGE\$ salary supplements.
- CCR&R staff conducted 55 trainings for early childhood educators. 277 participants attended these workshops.
- 3,009 instances of technical assistance were provided to Wayne County child care centers.
- Approximately 1,810 children were impacted by the WAGE\$ salary supplement program.
- 49 early care and education professionals participated in the Professional Development Program. 30 were enrolled in college course work and 25 completed course work whom we supported through educational advisement
- 498 children were enrolled in NC Pre-K at 19 sites with 34 classrooms.
- Despite COVID-19, 123 unduplicated visitors accessed the Lending Library.

## Health & Safety

Health Service Team

Safe Kids Coalition

- 326 instances of technical assistance were provided by the Child Care Health Consultant.
- 24 health and safety trainings were offered to 196 participants.
- Six child seat diversion classes were held in conjunction with the Wayne County District Attorney's office.
- 73 car seats were checked for proper usage and installation. This includes appropriate seat belt systems.
- The Safe Kids Coalition held seven events.

## Family Support

Community Services  
Coordination

Parents as Teachers

Raising a Reader

Incredible Years (BASIC  
Parenting Program)

Triple P (Positive Parenting  
Program)

- The Partnership participated in 12 community events and gave 15 community presentations.
- 648 Parents as Teachers virtual home visits were conducted and 12 group connections were offered to families.
- 42 parents attended workshops in the Raising a Reader program.
- 5 child care facilities participated in the Raising a Reader Program which distributed rotation book bags containing age-appropriate books to 141 children.
- 25 participants completed four series of Incredible Years classes.
- Triple P offered both individualized and seminar based sessions to meet the needs of parents seeking to strengthen parenting skills.



# Literacy Efforts

## Dolly Parton Imagination Library

38% of children ages birth-5 in Wayne County are sent age-appropriate books on a monthly basis. To enroll a child, parents or guardians fill out a simple, short application and their child will receive a high quality book each month until they reach the age of 5. The books are free and sent addressed directly to the child. The Partnership is proud to collaborate with the Imagination Library, which was established in 1995 and has mailed out over 120 million books to children in several states.



- Over **36,000** books were mailed to Wayne County children in conjunction with the Dolly Parton Imagination Library.
- Over **3,000** children received books in Wayne County.

## Little Libraries

Little Libraries is a project that was started to get books into the hands of as many Wayne County children as possible. Over 1200 books were distributed from the Partnership's Little Libraries project in Wayne County. The books are offered in refurbished newspaper boxes that were donated by the Goldsboro News Argus.

### Locations of our Little Libraries:

- Fremont Town Hall
- Wayne County WIC Office
- Downtown Goldsboro (Waynesborough House)
- Royall Avenue Wash House
- Partnership Office
- Grantham Dollar General
- Dudley F.L.O.C. Office
- Mount Olive Chamber of Commerce
- Westbrook Park (Mount Olive)
- Seven Springs Town Hall



Interested in donating books?  
Call: 919-735-3371 ext. 243

# Moving Forward



**Blair Cox**  
Joined the Partnership team in January as the Community Engagement and Development Coordinator. She brings experience and knowledge of working in the early childhood sector.



**Macie Walker**  
Came on board in July as the newest Parent Educator with the Parents As Teachers (PAT) program. Macie has an array of knowledge about PAT and the families they serve.



**Kimberly Barnes**  
Began at the Partnership in February as a Program Specialist. She brings a wealth of knowledge and over twenty years of experience working with young children and early childhood educators.



**Brittany Clemens**  
Parent Educator with Parents As Teachers, left the Partnership in July to care for her new baby boy. Brittany was an integral part of the PAT program and worked to support several families in Wayne County.

## Recognitions and Awards



In recognition and appreciation for 20 years of dedicated service to the Partnership for Children of Wayne County.



The Partnership for Children's staff member, Crystal Heath, was awarded the "*Excellence in Injury Prevention by an Individual*" award at the 2020 North Carolina Safe Kids Conference.

## Board Members

FY 2020-2021

Matthew Whittle

Board Chair

Dr. Paul Rutter

Vice Chair

Selena Bennett

Secretary

Bill Batts

Treasurer

Donna Phillips

At-Large

Felicia Brown

Kriquette Davis

Linda Holden-Cox

Shirvon Holland

Kevin Johnson

Grazia Mostella

Dr. Patty Pfeiffer

Scott Satterfield

Paula Shultze

Chrissy Smith

Dr. Brenda Weis

Cordelia Wilcox

Christina Williams



## In loving memory

Mr. Bill Edgerton impacted Wayne County and so many lives. He was a long time supporter of the Partnership for Children and served on the Safe Kids Coalition. Any event that the Partnership hosted, you could find Mr. Edgerton, his wife Jan and the Optimist Club there providing popcorn. If you ever asked him how he was doing, he would always say "absolutely marvelous!" He will be missed greatly by our Partnership and we are thankful to have had him as a friend. He was truly a man with a servant's heart!

### Follow us on Social Media



PFCWayne



@PartnershipWayn



PFCWayne



PFCWChannel

Visit our website

[www.pfcw.org](http://www.pfcw.org)

## Staff

Amanda Atkinson

Rosa Audelo

Kimberly Barnes

Logan Bill

Michelle Chambers

Blair Cox

Lorena Esparza

Angela Frady

Crystal Heath

Maria Lopez

Thomas Nevins

Sharon Price

Donna Toler

Delaine Tucker

Macie Walker

Valerie Wallace

Shelly Willis



Scan me

To donate to the Partnership scan this QR code with your phone.

